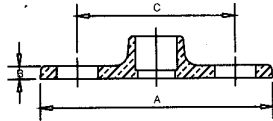


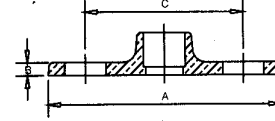
Cast Brass Flanges

**125# Companion Flanges
 w/A.S.M.E. Drilling
 (Copper Sweat)**



Part #	Nominal Size	Pkg. Qty.	List Price
K11-342-0050	1/2	-	\$ 158.11
K11-342-0100	3/4	30	\$ 158.11
K11-342-0150	1	50	\$ 103.84
K11-342-0215	1 1/4	45	\$ 112.74
K11-342-0295	1 1/2	24	\$ 188.02
K11-342-0390	2	15	\$ 271.13
K11-342-0520	2 1/2	12	\$ 348.79
K11-342-0650	3	6	\$ 361.02
K11-342-0860	4	6	\$ 503.70
K11-342-1100	6	2	\$ 985.47

**150# Companion Flanges
 w/A.S.M.E. Drilling
 (Copper Sweat)**



Part #	Nominal Size	Pkg. Qty.	List Price
K11-345-0150	1	20	\$ 169.30
K11-345-0215	1 1/4	30	\$ 150.18
K11-345-0295	1 1/2	20	\$ 263.04
K11-345-0390	2	15	\$ 338.27
K11-345-0520	2 1/2	5	\$ 426.34
K11-345-0650	3	6	\$ 441.68
K11-345-0860	4	3	\$ 667.32
K11-345-1100	6	2	\$ 2,159.92
K11-345-1225	8	1	\$ 4,974.40

Conform to ANSI/ASME B1.20.1 and ASTM B584-93b

LT Connections is not responsible for typographical or printing errors that may be contained in this price sheet. Prices subject to change without notice.

Warranty: Seller warrants that all fittings will be free from defects in materials and construction that will impair their usefulness, provided they are used as recommended. Any fitting that proves to be defective will be replaced or a credit issued but no incidental labor charges, expenses or damages will be allowed.

Not recommended for marine or aviation applications. Usage in these applications will void all warranties and liability.

Copper Tube (Alloy C 12200) has been evaluated by NSF International to NSF/ANSI Standard 61 for use in drinking water supplies of pH 6.5 and above. Drinking water supplies that are less than pH 6.5 may require corrosion control to limit leaching of copper into the drinking water.